



University of California Cooperative Extension, Fresno

Nutrition Education Opportunities for Food Stamp Eligibles and Food Stamp Employees



Nutrition, Family, & Consumer Sciences Advisor

Connie Schneider, PhD, RD
(559-456-7142)

Nutrition Consultant & Program Development
Employee Nutrition Education
Newsletter Q & A

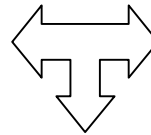
**Adult & Youth
Nutrition Education**
Patty Davidson, Manager
(559-456-7546)

Clientele Workshops
1.5-2 hours

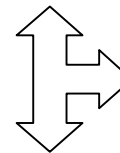
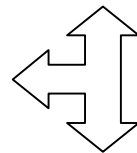
Childhood Anemia Prevention
Feeding Skills for Parents
Decreasing Risk - Type II Diabetes

Clientele Certificate Series
Healthy Families
8, 1-hour lessons
Family Nutrition
Food Resource Management
Food Safety

Includes
Shopping Tips
Parenting Skills
Food Demonstrations
Physical Activity



Employee Wellness
Nutrition Classes
Worksite Wellness
Newsletter Q & A
Web Lessons



Clientele Nutrition Education
Lobby Education
Workshops
Certificate Series

**Network for a Healthy California
Central Valley Region**
Nichole Mosqueda, Manager
(559-456-7210)

Client Lobby-Education
Simple & Short Messages
Introduction to Class Series
Education Reinforcement
Clientele Food Demonstrations
Physical Activity Demonstrations

Video Tapes / DVDs:
Latino, African American
Hero Moms

Employee Nutrition Classes
Customized for supervisor training
Tips to educate clients
Handouts to duplicate

Employee Fit Tips Newsletter
Central Valley Special Editions
Weekly News Update



Funding is provided through the Food Stamp Nutrition Education Program of California and Network for a Healthy California by the United States Department of Agriculture (USDA) Food Stamp Program, and other funds. For more information about the California Food Stamp Program, call 1-800-952-5253. The University of California prohibits discrimination or harassment of any person on the basis of race, color, national origin, religion, sex, gender identity, pregnancy (including childbirth, and medical conditions related to pregnancy or childbirth), physical or mental disability, medical condition (cancer-related or genetic characteristics), ancestry, marital status, age, sexual orientation, citizenship, or status as a covered veteran (covered veterans are special disabled veterans, recently separated veterans, Vietnam era veterans, or any other veterans who served on active duty during a war or in a campaign or expedition for which a campaign badge has been authorized) in any of its programs or activities. University policy is intended to be consistent with the provisions of applicable State and Federal laws. Inquiries regarding the University's nondiscrimination policies may be directed to the Affirmative Action/Staff Personnel Services Director, University of California, Agriculture and Natural Resources, 1111 Franklin Street, 6th Floor, Oakland, CA 94607, (510) 987-0096.